



DY-682

DY-682

Absorption / emission max.:
690 nm / 709 nm(in Ethanol)

Molar absorbance:
140.000 M⁻¹cm⁻¹

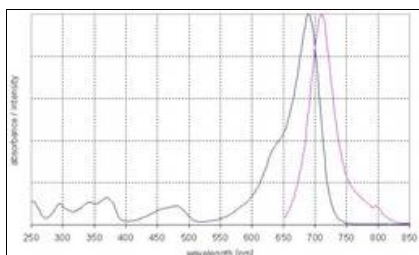
Comments:

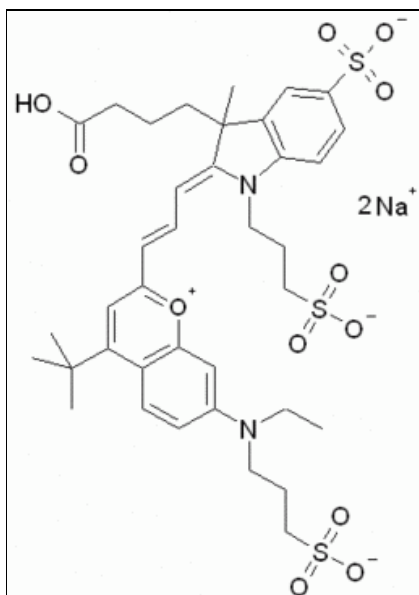
- Soluble in water, methanol, DMF, DMSO
- Bright solid state emission
- Spectral similar to Cy 5.5, IRD 700 and Alexa Fluor 680
- Two negative charges
- Enhanced water solubility and polarity

Available Modifications

| Available Modifications | Molecular Weight (g • mol ⁻¹) | Molecular formula | Productnumber |
|-------------------------|---|---|---------------|
| Carboxylic acid | 852.96 | C ₃₇ H ₄₆ N ₂ O ₁₂ S ₃ Na ₂ | 682-00 |
| NHS-ester | 950.03 | C ₄₁ H ₄₉ N ₃ O ₁₄ S ₃ Na ₂ | 682-01 |
| Amino-derivative | 873.05 | C ₃₉ H ₅₃ N ₄ O ₁₁ S ₃ Na | 682-02 |
| Maleimide | 975.08 | C ₄₃ H ₅₂ N ₄ O ₁₃ S ₃ Na ₂ | 682-03 |

Diagram, Formel





Order

| Available Modifications | Amount | Productnumber | Price | Enter quantity |
|-------------------------------|--------------|---------------|-------------|----------------|
| DY-682, aminomodified | 1 mg | 682-02 | 189,00 € | |
| DY-682, Carboxylic acid | 1 mg | 682-00 | 117,60 € | |
| DY-682-Maleimide | 1 mg | 682-03 | 189,00 € | |
| DY-682-NHS-ester | 1 mg | 682-01 | 147,00 € | |
| DY-682-NHS-ester, portionized | 5 x 0.2mg | 682-01A | 175,00 € | |